



Meetings:

Every 4th Monday
of the Month
(no meetings in
June, July,
August, or
December)

Next
Meeting:
02-27-2023
7:00 PM

NEW LOCATION

St. Mary's
Episcopal Church,
3100 N. Broadway,
Edmond, OK
**the building to the
left of the main
entrance*

Contact:
P.O. Box 1272
Edmond, OK
73083

Upcoming Meeting - February 27, 2023

On February 27th, our guest speaker will be **Cinda Covel**, who will be talking to us about public art in Edmond.

Cinda stepped away from her position as the Certified Municipal Clerk to accept what she calls her "dream job." She served as City Clerk and Art Liaison for the City of Edmond from March of 2018 until September of 2022. She began her journey with the City of Edmond in 2010 that lead her to become an advocate for public art. In 2012 while serving as the Administrative Specialist to the Director of Parks & Recreation, she also became the liaison to the EVAC (Edmond Visual Arts Commission.) For the next decade, her passion for public art continued to grow.

Awards for her work with the public arts include City of Edmond Continuous Improvement, Historical Society & Museum for Historic Preservation, and Keep Oklahoma Beautiful for Governments larger than 40,000.

In September of 2022 Cinda accepted the position of Public Art Director with the PCT (Park Conservancy Trust.) The PCT is contracted to be over the City of Edmond's Art In Public Places Program. Cinda is now in her dream job and still serving as Secretary to the PCT, and Staff Liaison to the EVAC. Her current focus is taking the Edmond Public Art Program to the next level through tourism by gaining the national and global attention this collection of more than 300 pieces deserves.

Many thanks to **Randel Shadid** and **Hal French** for their presentation about The Uncommon Ground development at Coltrane and Second Street in Edmond. We got to see pictures of some of the 40 sculptures that will be installed throughout the park, along with a map showing the many points of interest being built.



- The **Bird's Nest** will be an observation deck on the highest point of the property, 34 feet above the ground.
- The **Glass House** will contain administrative offices, a visitor center, meeting rooms, and space for events.
- The **Horseshoe Pavilion**, which utilizes part of the old horse barn on the property, is a 200-foot concrete structure, which will have adjacent lawn space and picnic areas.
- The **Crosstimbers** building near the entry will have information, snacks, drinks, and souvenirs.
- The **Tallgrass Stage** with an event lawn in front of it will be available for a fee for concerts and plays.
- The **walking trails** will connect with the city's master trails from Mitch Park to Lake Arcadia.
- The **children's play area** will be modeled after The Gathering Place in Tulsa.
- There will be an **adult fitness area**, with an adventure course containing obstacles, climbing nets, and towers.
- The **dog park** will have separate areas for small and large breeds.
- There will also be a **water park, ponds, and restaurants** to the south of the park along Second Street (Route 66).

Admission to the park is free. Operation/maintenance costs are expected to be \$2-3 million/year and will be funded by leasing the restaurant spaces and fees collected from booked events. The park will be marketed within a 400-mile radius and is expected to have a significant economic impact on the city.

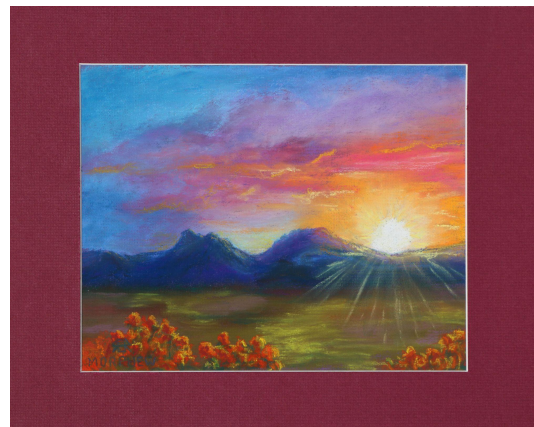
The opening date has been pushed back due to unavailability of the necessary electrical transformers (a nationwide shortage). They are currently hoping to have the park completed by Fall 2024.

Artist of the Month - January 2023

Congratulations, **Kim Harrison!**



*Here are some of the other paintings by our members from January's meeting.
Thank you all for sharing your work!*



**Remember to bring your artwork to the the next meeting
to be considered for the 'Artist of the Month'!**



**There are many reasons
to *love* being a member of the
Edmond Arts Association:**

1. **Art Demonstrations**
Learn something new every month – different artists, different mediums, different techniques!
2. **Community**
Meet other local artists and art lovers.
3. **Publicity**
Ability to promote your art activity in the community via Facebook and the monthly EAA newsletter.
4. **Awards**
Bring a piece of artwork to enter for the EAA *'Featured Artist of the Month'* award.
5. **Local Displays**
Let other Edmond residents see your work at the Edmond Library each November, or at the city offices all year round.
6. **Local Art Events**
Sell your art at events such as the EAA Spring Show and EAA Fall Show.

EAA Annual Dues

(year runs from January-December)

Individual - \$35

Family - \$45

Business or Institution - \$50

Student - \$15

Membership forms can be found at

www.edmondart.org

*Interested in becoming a board
member?
Contact Marti at 405-850-7821.*

EAA 2023 Board members:

| | | | |
|-----------------|--------------|-----------------------|-----------------------|
| President: | Kim Harrison | Newsletter Chair: | Sarah Russell Morphew |
| Vice President: | Andrea Moon | Exhibition Chair: | <i>(Open)</i> |
| Secretary: | Amena Butler | Website/Social Media: | Chris Cargil |
| Treasurer: | Marti Nelson | Member at Large: | Roberta Hollis |
| Show Chair: | Marti Nelson | Historian: | Amena Butler |
| Program Chair: | Susie Varner | | |



What: Local artists showing and selling their work

Where: Downtown Edmond along Broadway, and 1st St/the Railyard

When: First Thursday of the month from April - October, from 5-9 pm

Why: Art! Community! Enjoy Downtown!

See www.edmondvibes.org for more info.

Classifieds

Rory Morgan is looking to sell several items. Contact him at 405-313-2313 if interested.

Lightdome canopy with 3 awnings, plus corner weights, \$700.

12 carpeted Armstrong panels, buff brown, with adjustable legs, \$125 each.

Fletcher 2100 48" inch mat cutter, all options, \$600.

Shrink wrapper + heat gun, \$250.

Mat board cabinet + 60 sheets of mat board, \$200.

72" oak drafting table, \$900.

2 wooden studio chairs, \$250.

****If you or someone you know is selling art supplies, festival supplies – anything art-related – please email me info at sermorphew@gmail.com so I can include it in the next newsletter!***

Other Events

3/2 Marie Kash Weltzheimer's Gallery Opening
Edmond Fine Arts Institute

1/9 - 3/13 - David Padgett at North Gallery and Studios
Northpark Mall

4/15 Deadline to drop off completed 5x5's for Edmond Fine Arts fundraising sale.

5/4 Edmond Fine Arts Institute 5x5 Sale, 5 PM
27 E. Edwards Street

Got an idea for something to add to the newsletter? Let me know!

sermorphew@gmail.com